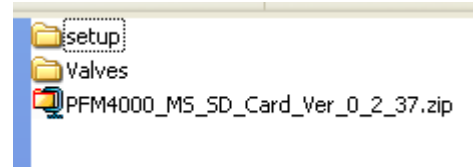


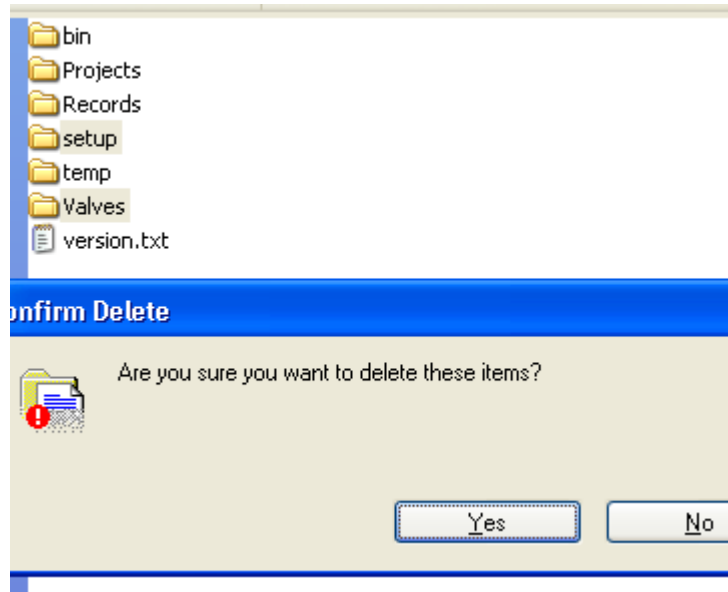
PFM4000 – installation of software

1) Extract zip-file on your desk top or in files



2) Delete folders on PDA

- setup
- valves



3) Copy new files to SD card

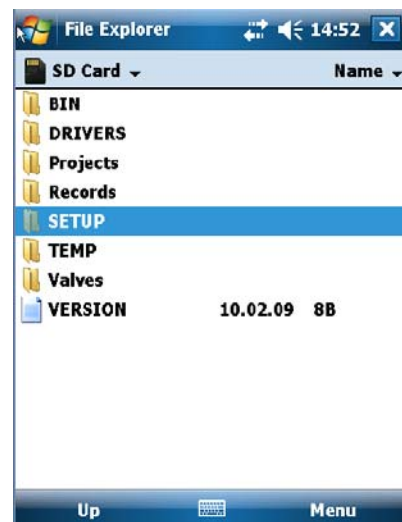
Now valve data base is updated



Updating software

Run the file PFM4000Bt.cab on PDA

Select setup on SD Card

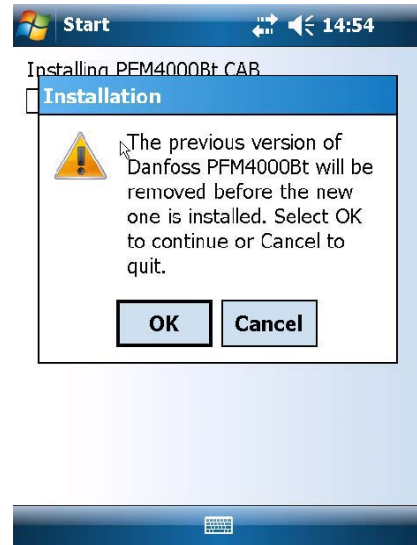


PFM4000 – installation of software

Dobbelt click on item



Click "OK"



Choose device and press "Install"

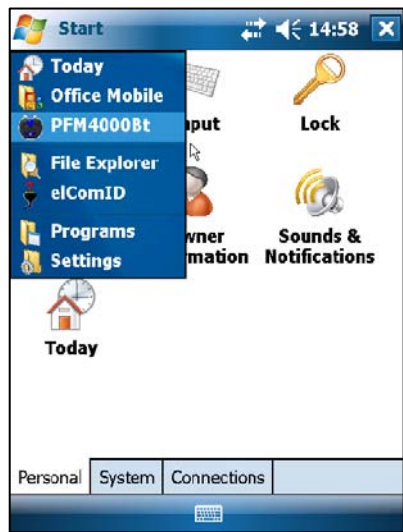


PFM4000 – installation of software

Installation was done successfully



Choose PFM4000Bt



See that software has been updated successfully

